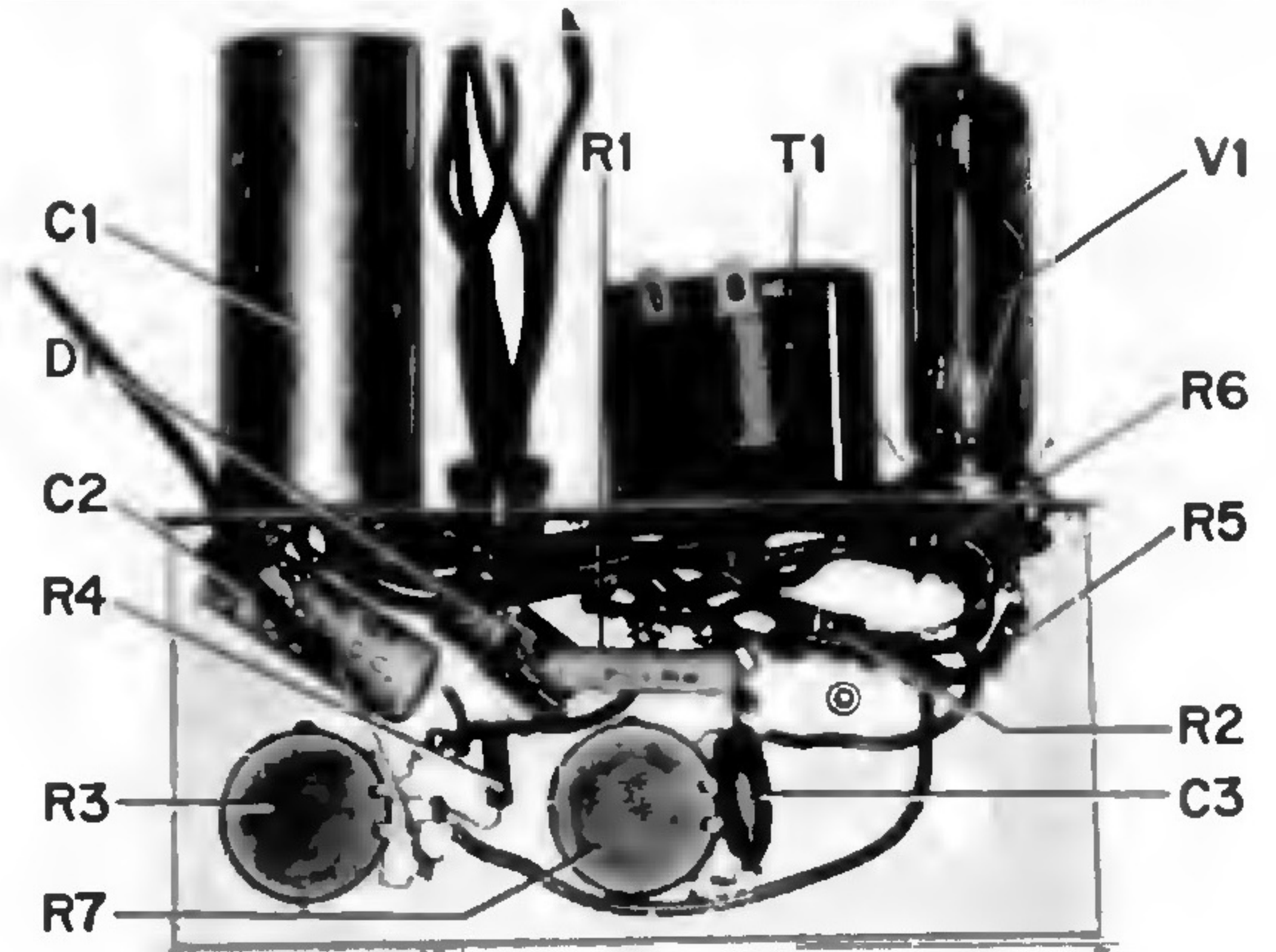
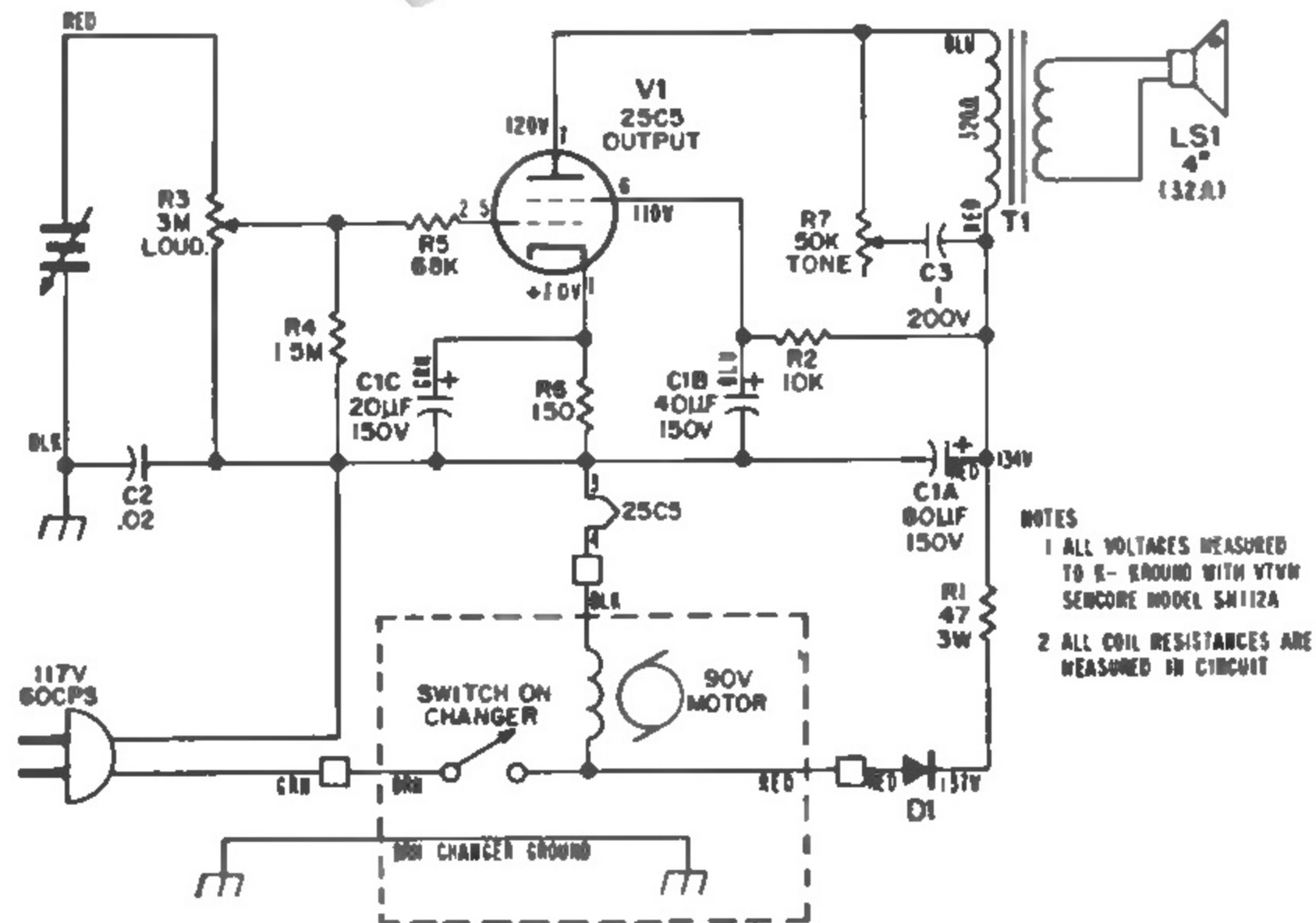


PHILCO Model P1441



Model P1441 Bottom View - Component Layout

CHASSIS REMOVAL - MODEL P1441

1. Remove 6 panel (motorboard) screws, lift panel then disconnect 2 speaker leads and audio cables from changer.
2. Remove knobs (Tone & Loudness).
3. Remove bushing nuts from control shafts.
4. Lift panel and remove chassis.

RECORD CHANGER REMOVAL - MODEL P1441

1. Remove 6 panel screws.
2. Lift front end of panel with changer and amplifier.
3. Disconnect power and audio leads.
4. Straighten changer mounting bolt clips then lift off record changer.